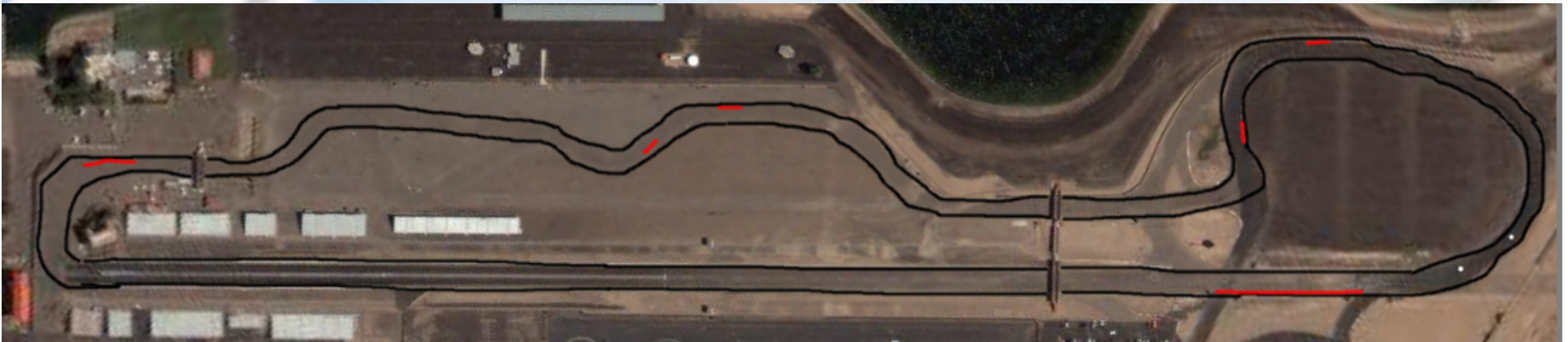
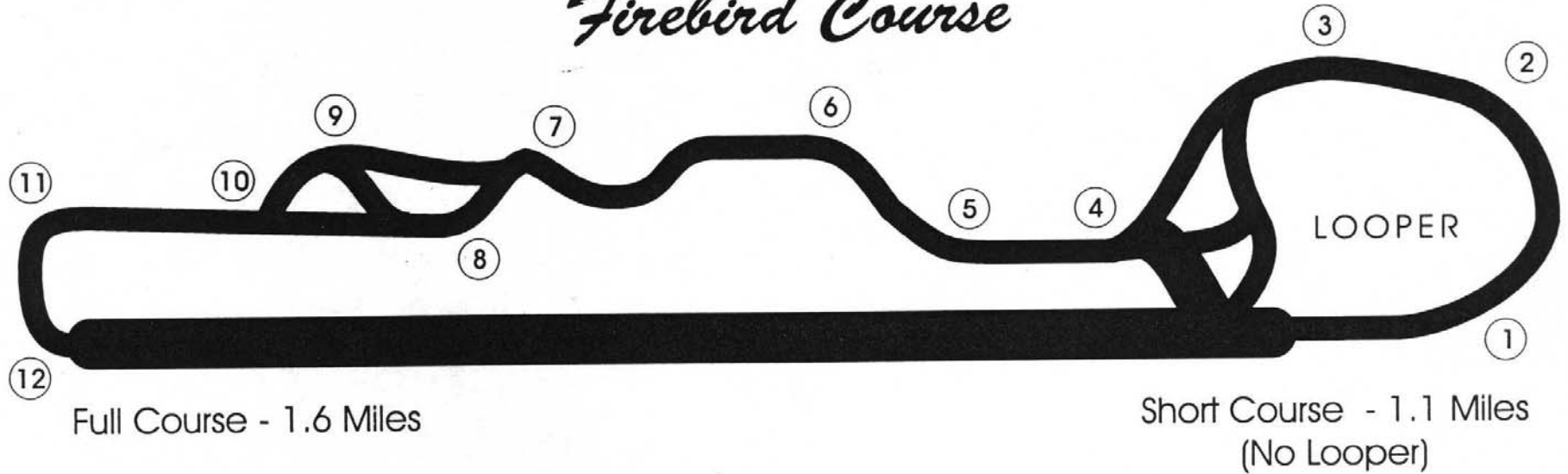




The "Line" – Firebird Main

Firebird Course



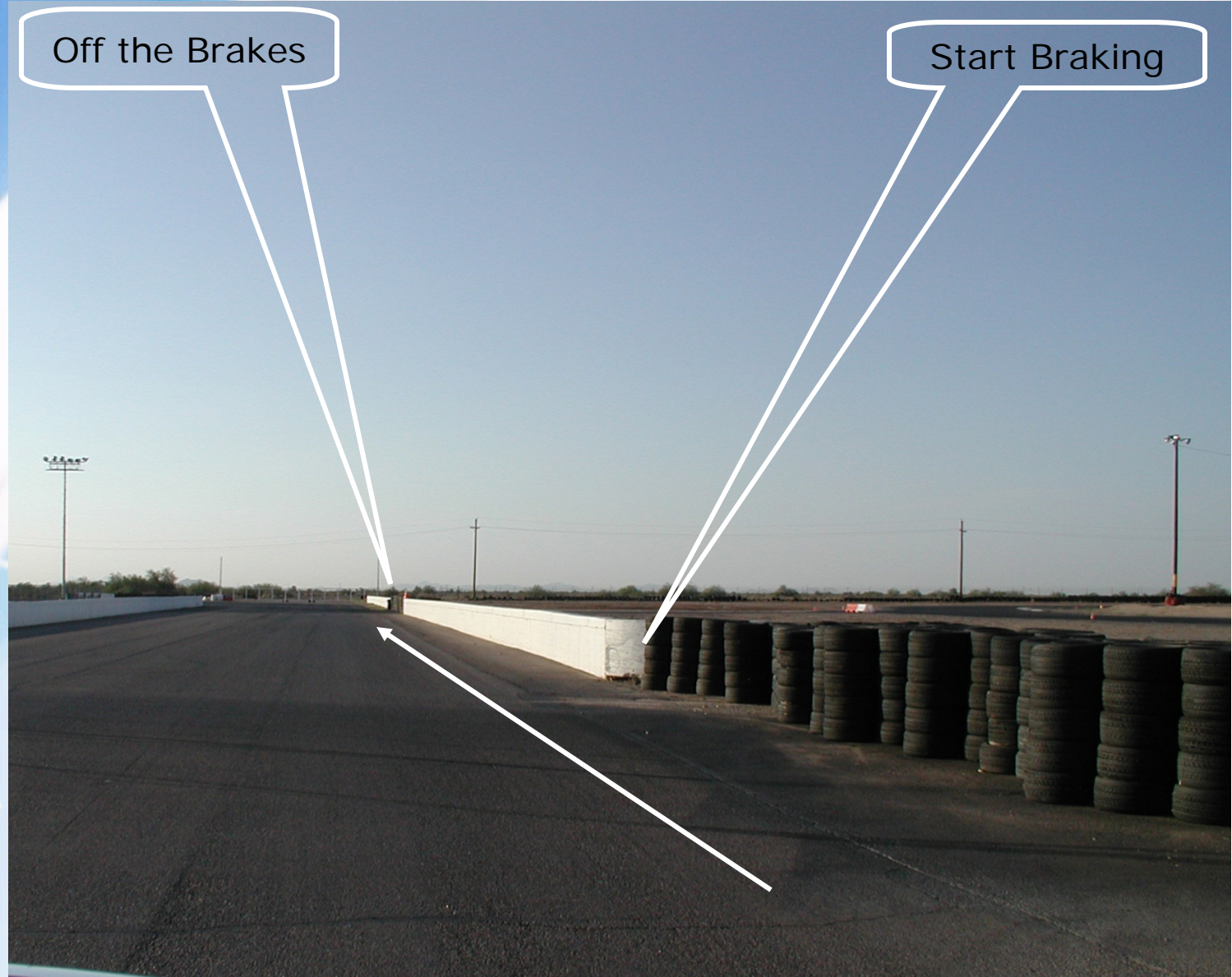
Pit Out



Braking Zone – Turn 1

Off the Brakes

Start Braking



Turn 1 – Enter the “Looper”

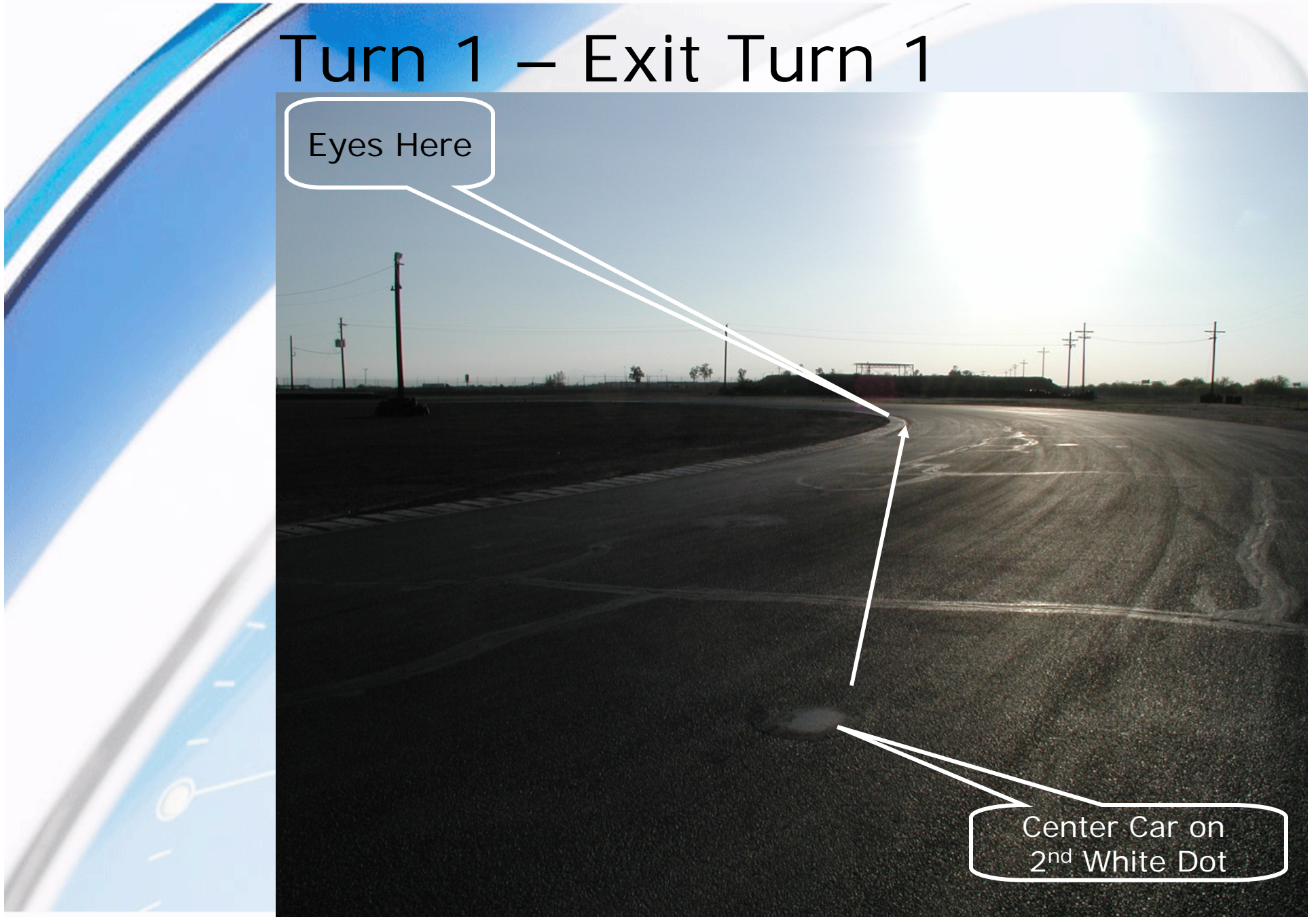
Left front tire on
first white dot



Turn 1 – Exit Turn 1

Eyes Here

Center Car on
2nd White Dot



Turn 2 – Mid Corner

Eyes on the Firebird Sign

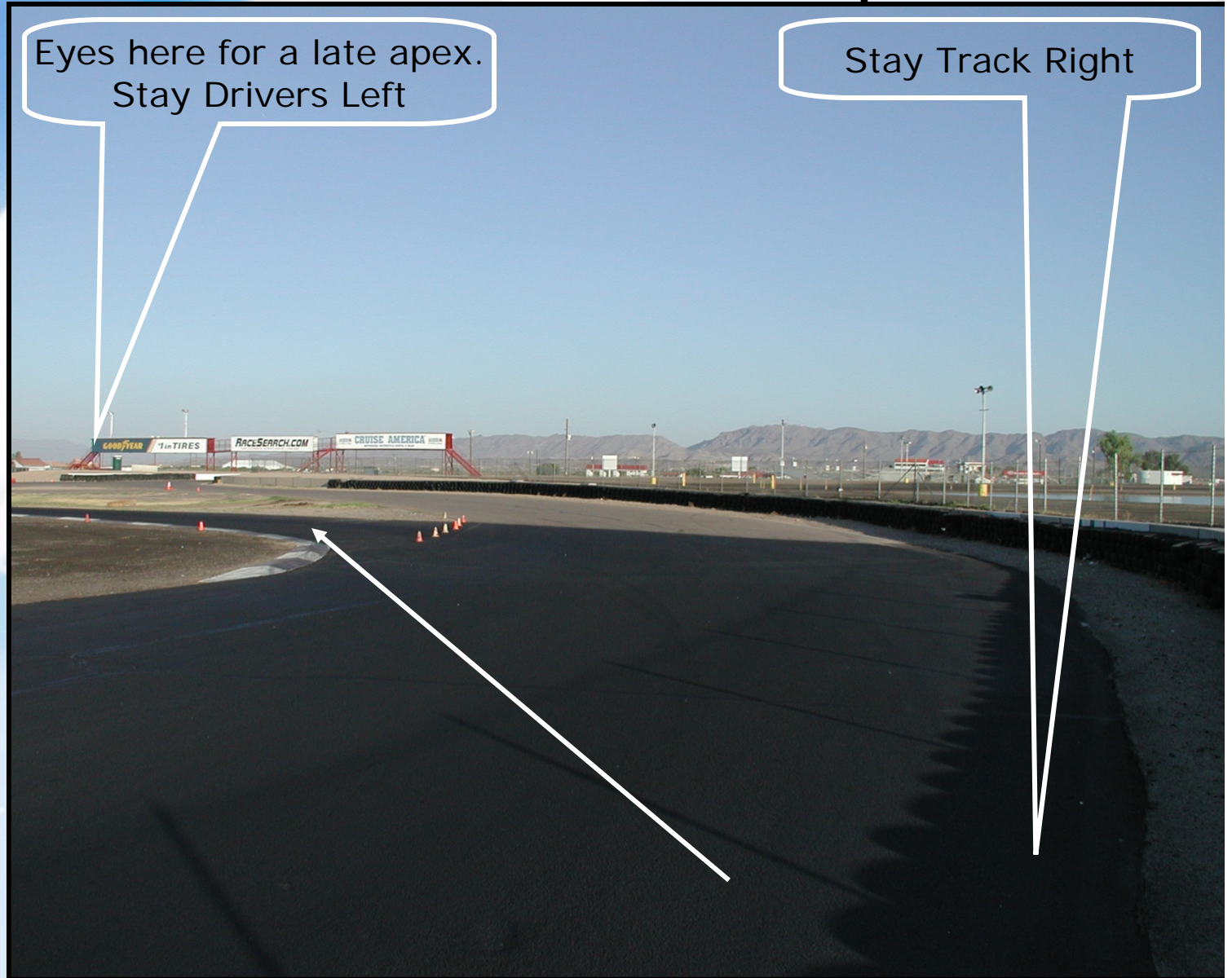
Left front tire here



Turn 3 – Exit the “Looper”

Eyes here for a late apex.
Stay Drivers Left

Stay Track Right



Turn 4 – Concrete Canyon #1

MANDATORY

Brush Brake to settle car;
BE AT TRACK LEFT

Late Apex

Race Entrance –
NOT School
Entrance



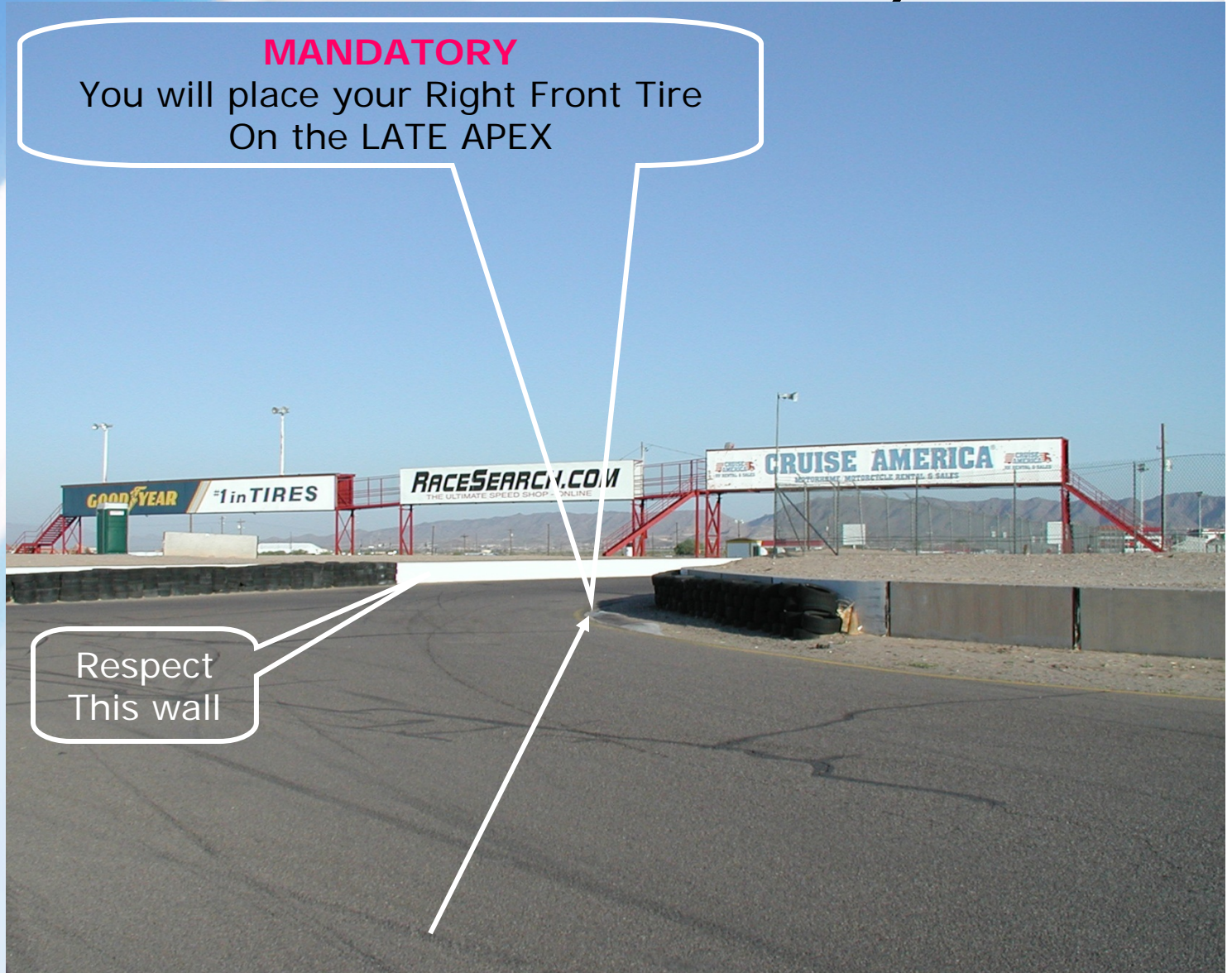
Turn 4 – Concrete Canyon #2

MANDATORY

You will place your Right Front Tire
On the LATE APEX

Race Entrance –
NOT School
Entrance

Respect
This wall



Turn 4 – Canyon Approach



Turn 5

Enter Turn 4 correctly and
you **WON'T** be here

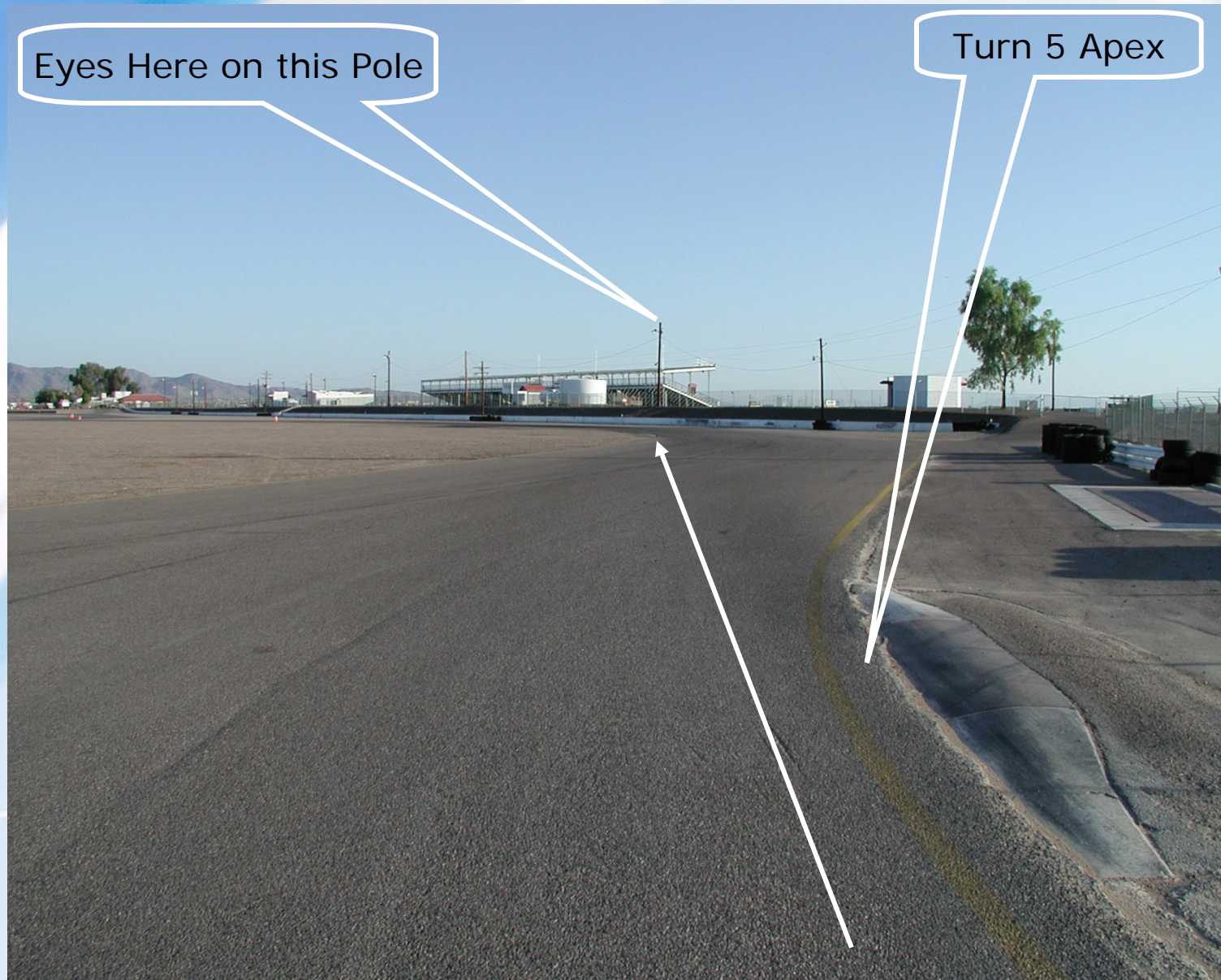
Eyes at Turn 5 apex



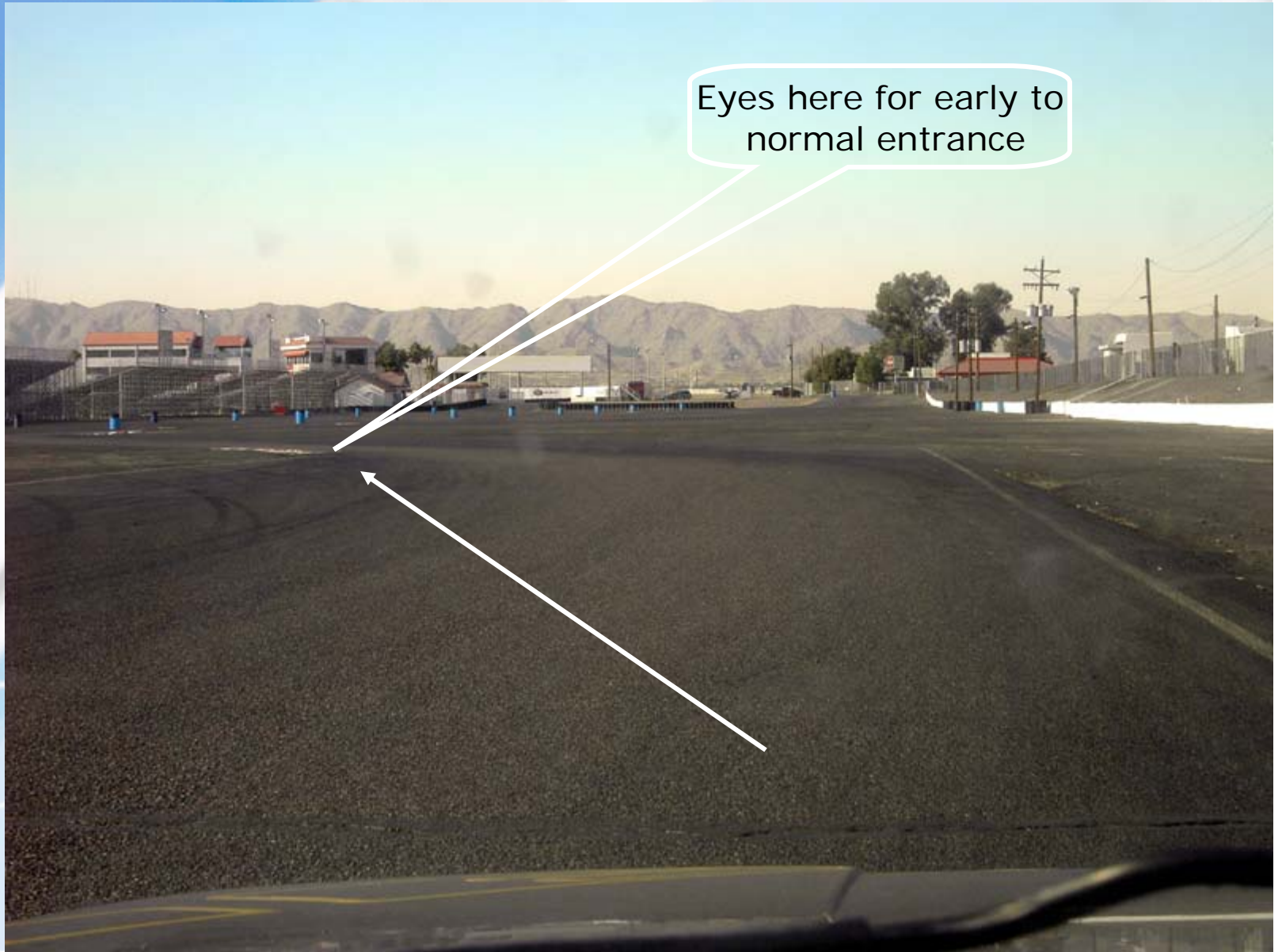
Turn 6a

Eyes Here on this Pole

Turn 5 Apex



Turn 6b

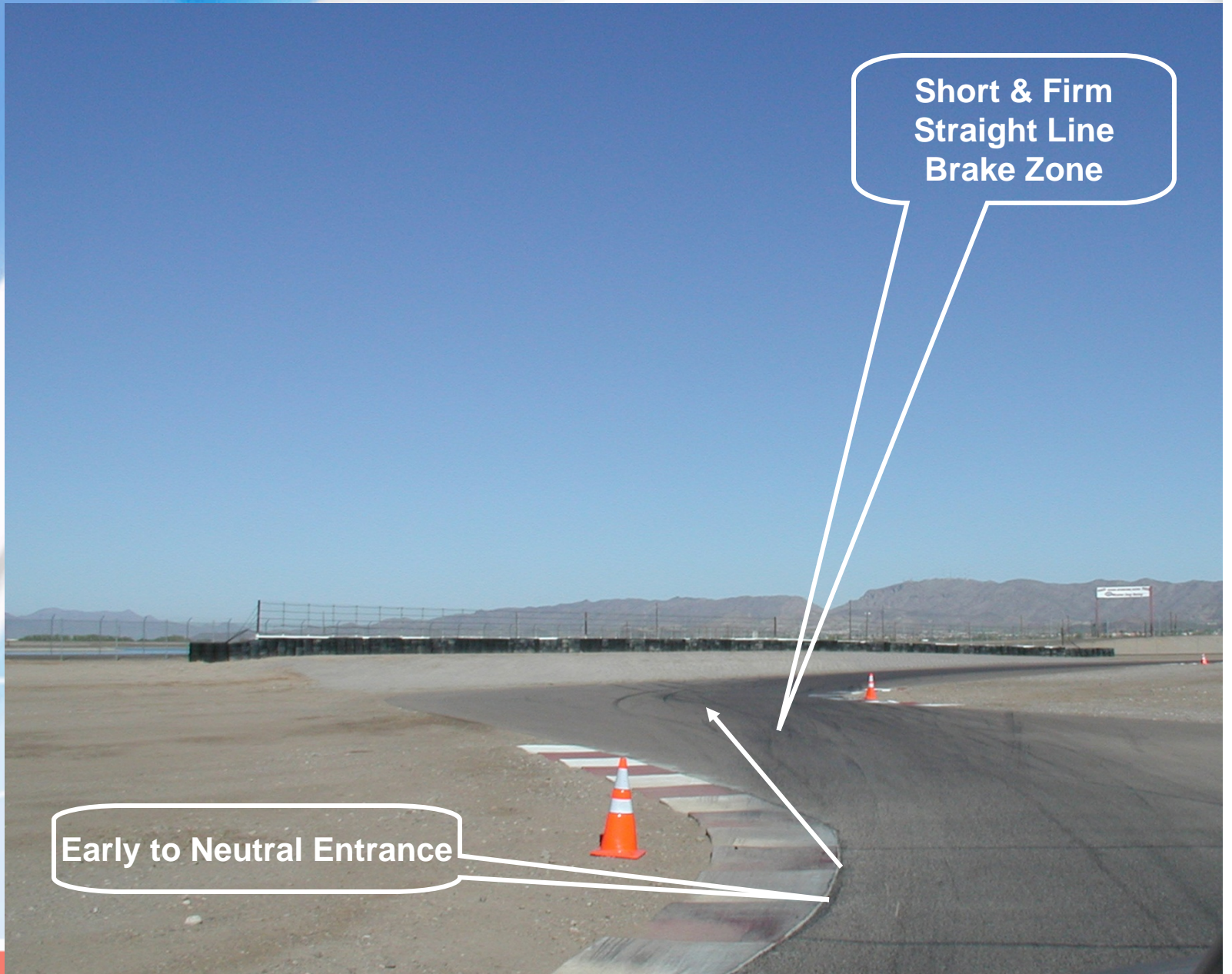


Eyes here for early to normal entrance

Turn 7

Early to Neutral Entrance

Short & Firm
Straight Line
Brake Zone



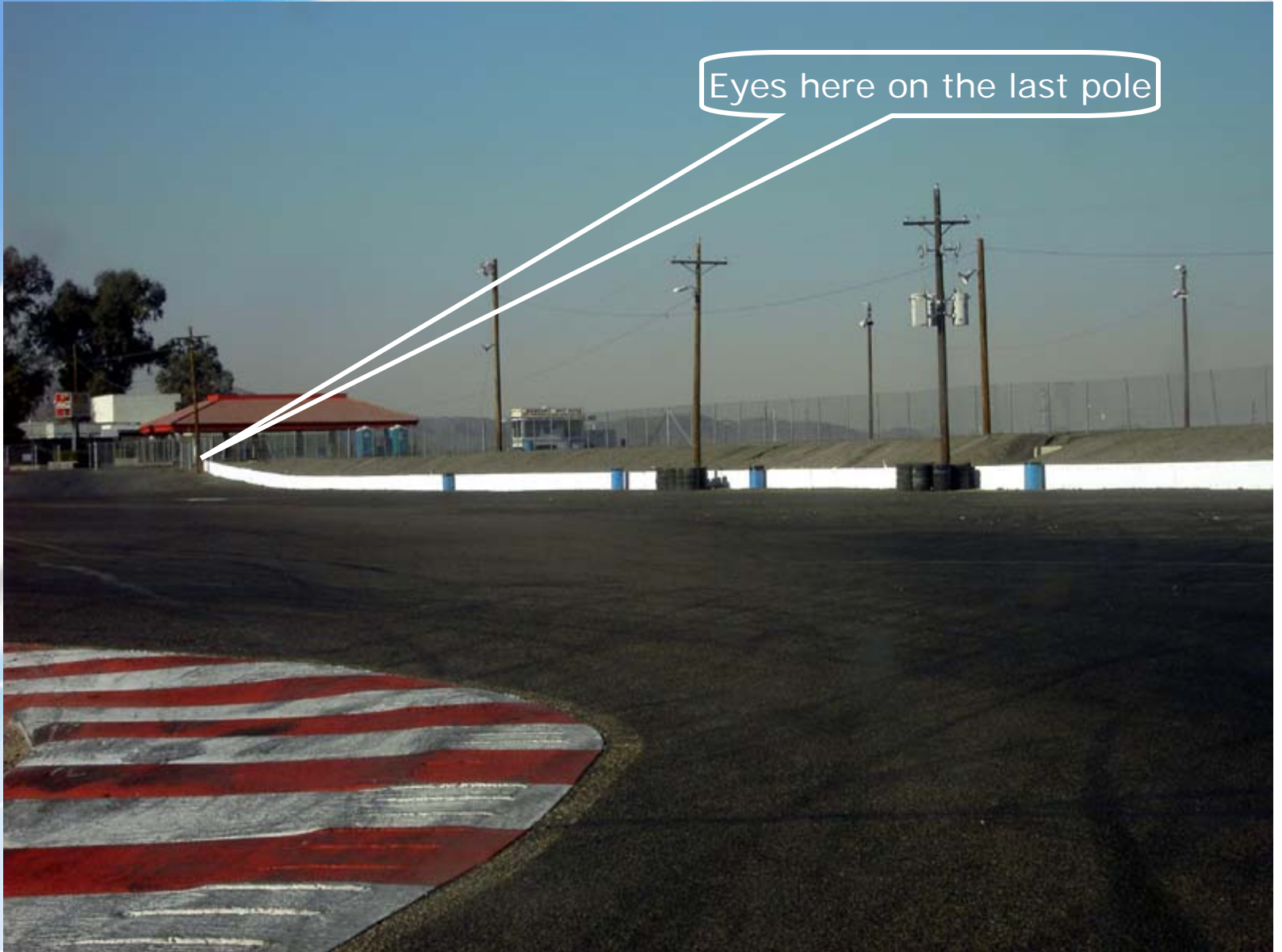
Turn 7 - Chicane

Eyes here on
apex of Turn 8



Turn 8 - Chicane

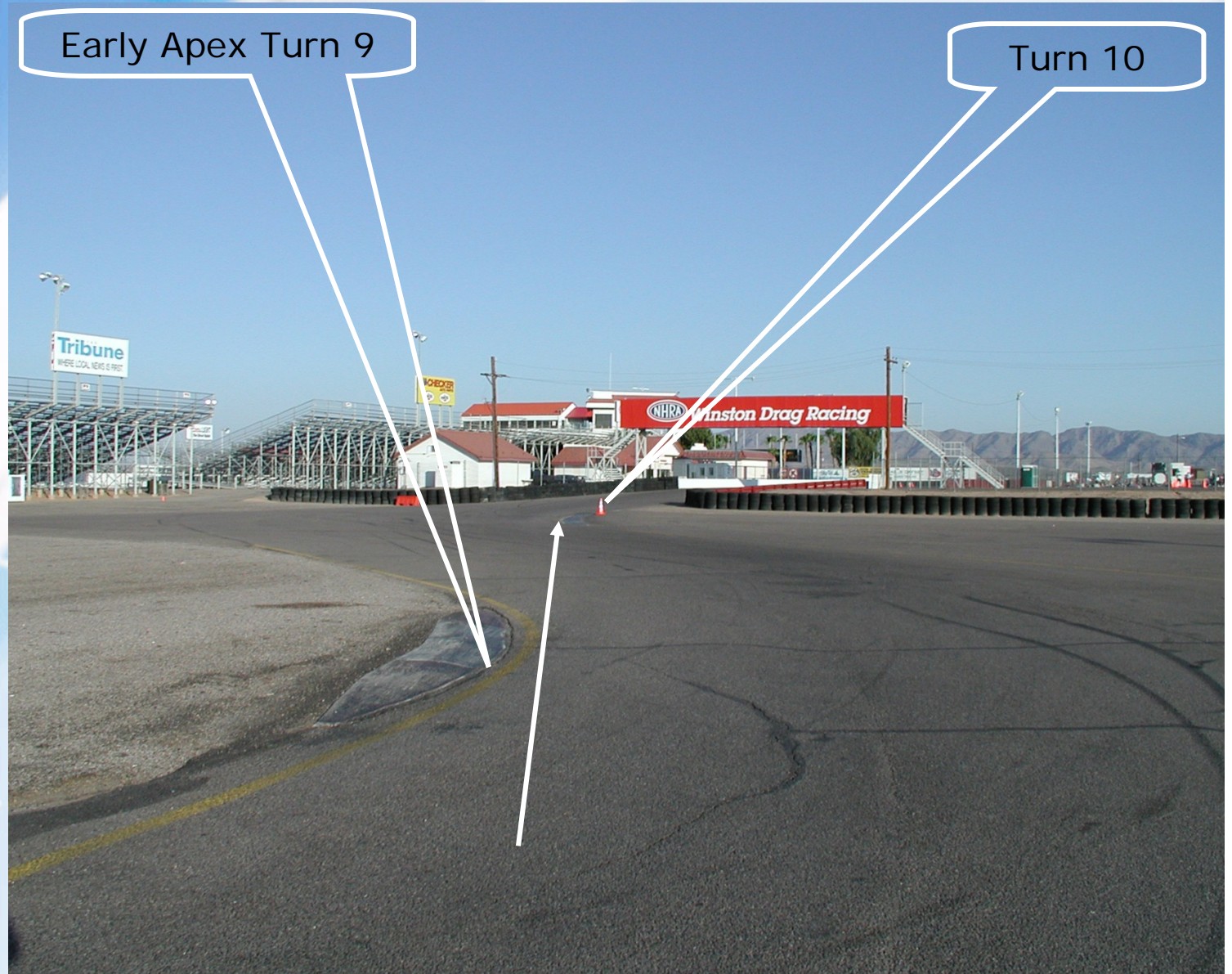
Eyes here on the last pole



Turn 9

Early Apex Turn 9

Turn 10



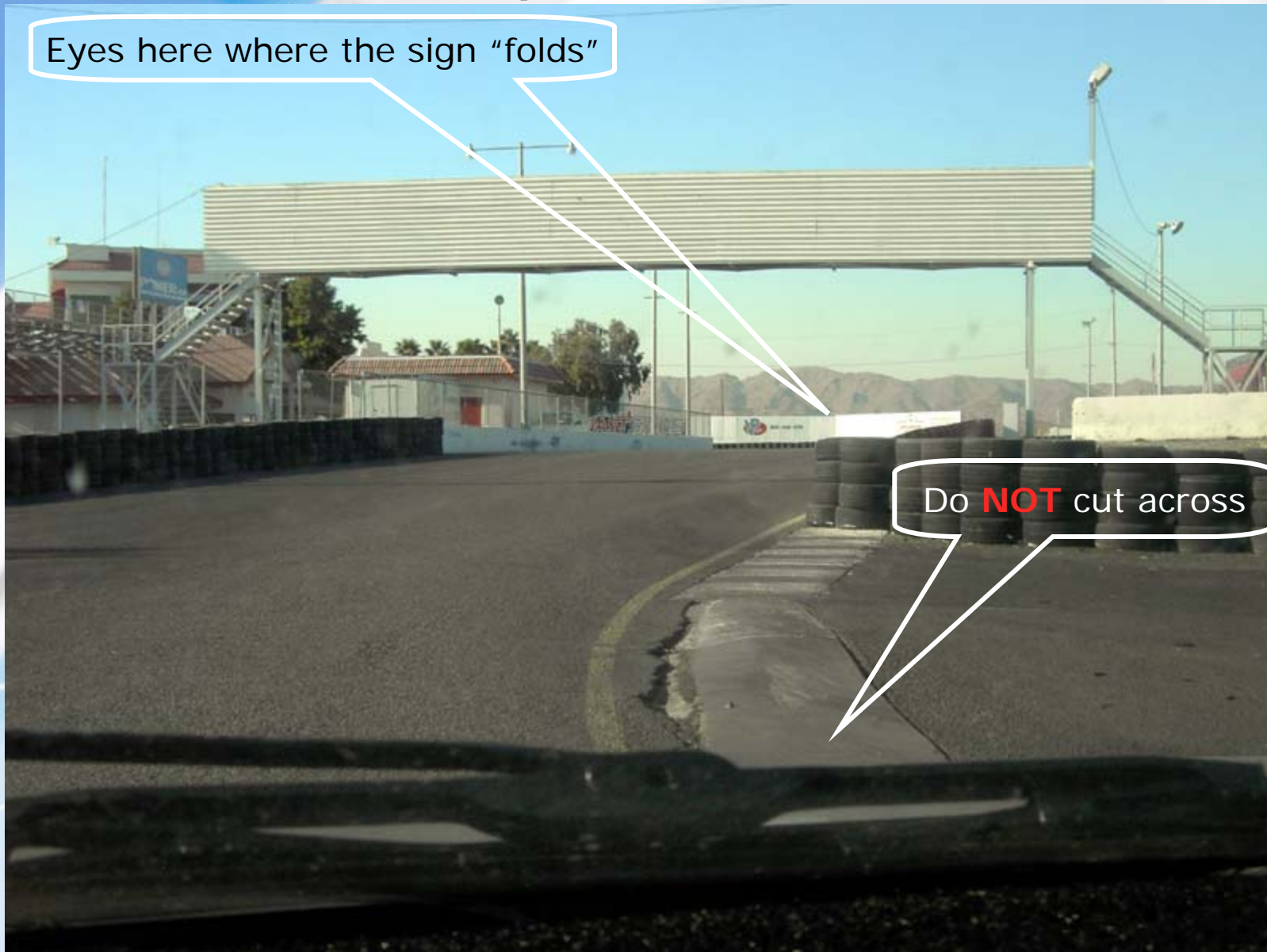
News Flash!

- *Sheet metal bends where the space time continuum meets*

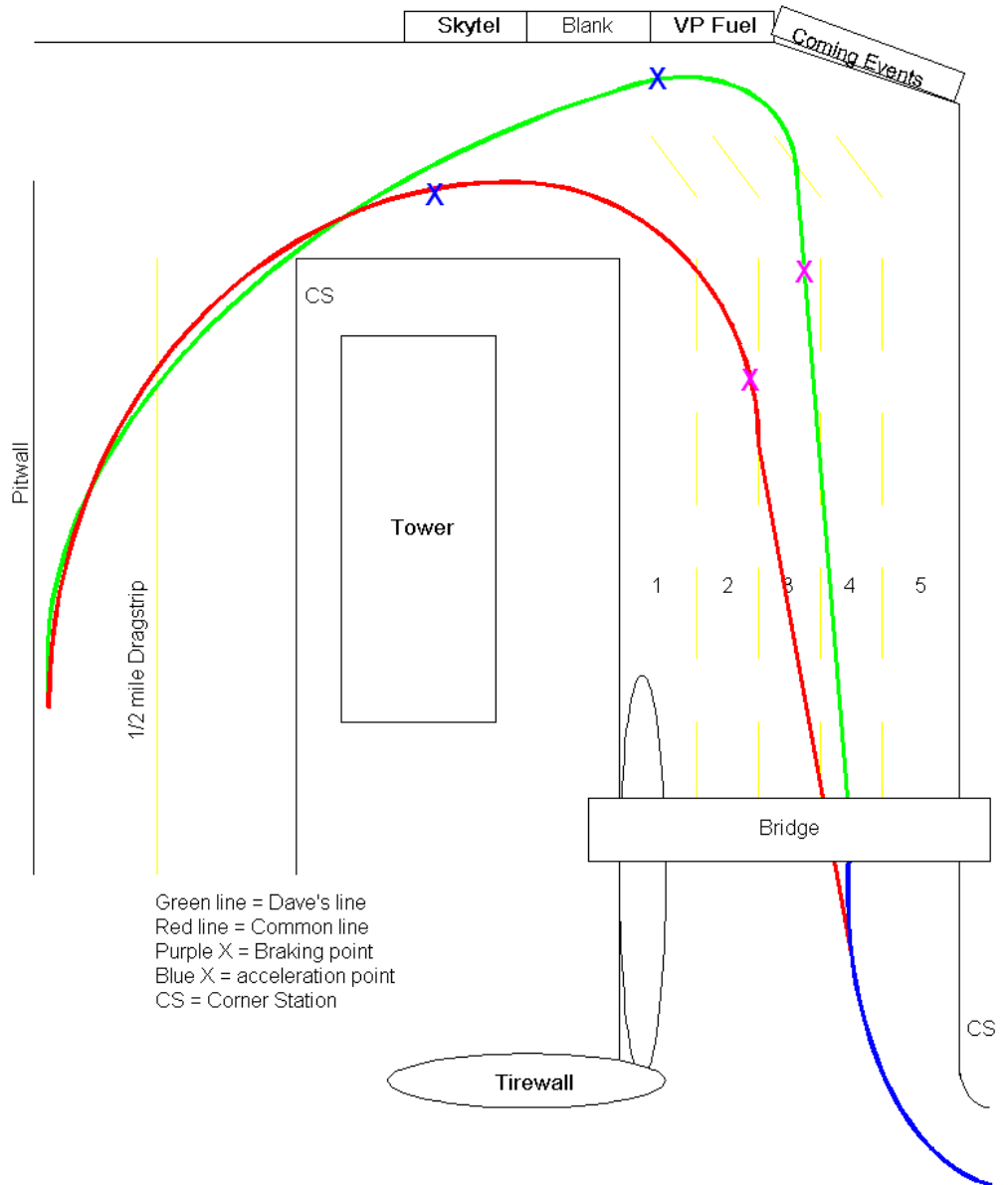
Turn 10 - Uphill

Eyes here where the sign "folds"

Do **NOT** cut across



Tower Turn



Turn 11 – Corner Entrance

Eyes Here

Drive from Lane 5 to straddling Lane 3-4 at Apex Where the lane lines “bend”

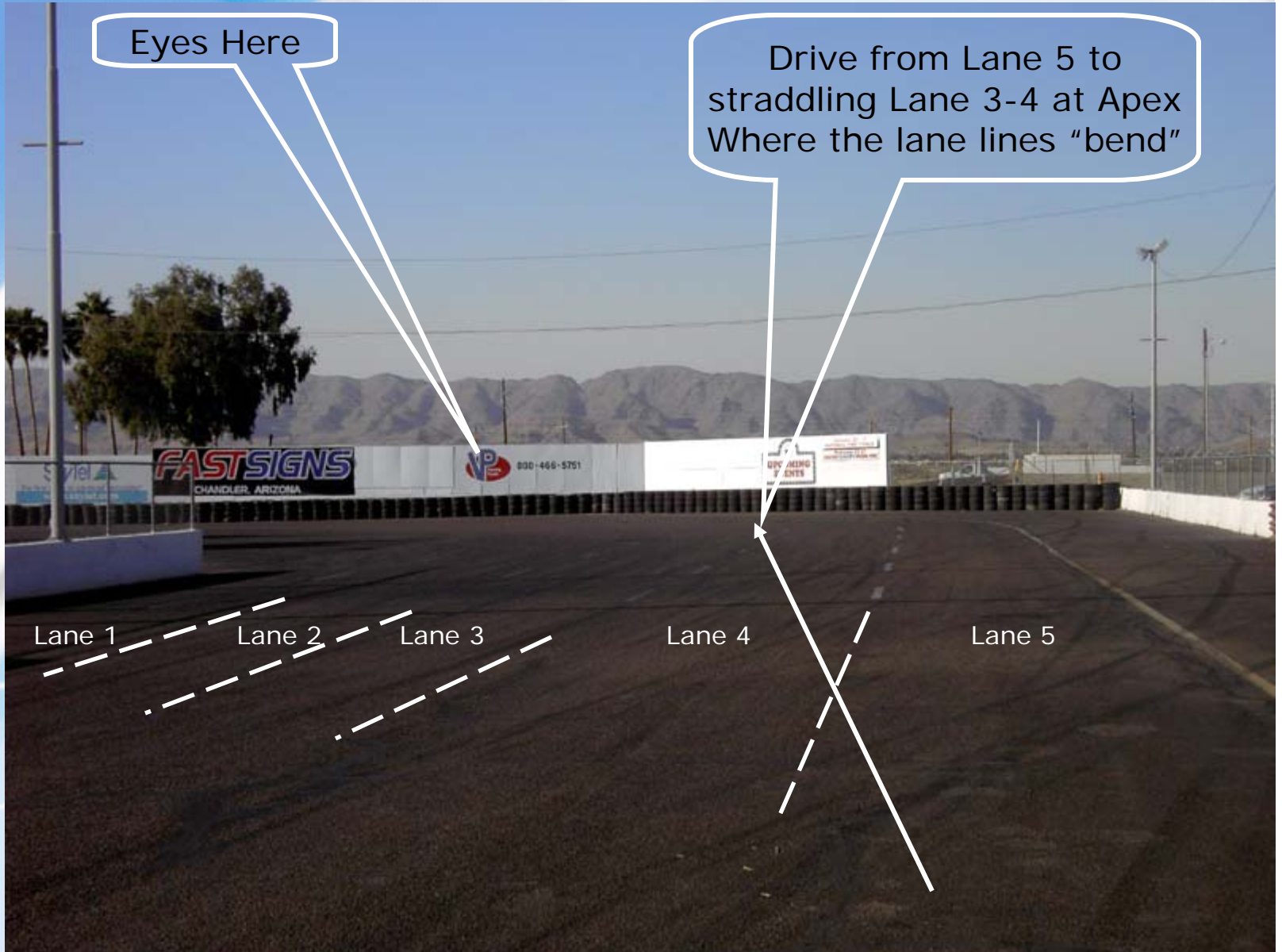
Lane 1

Lane 2

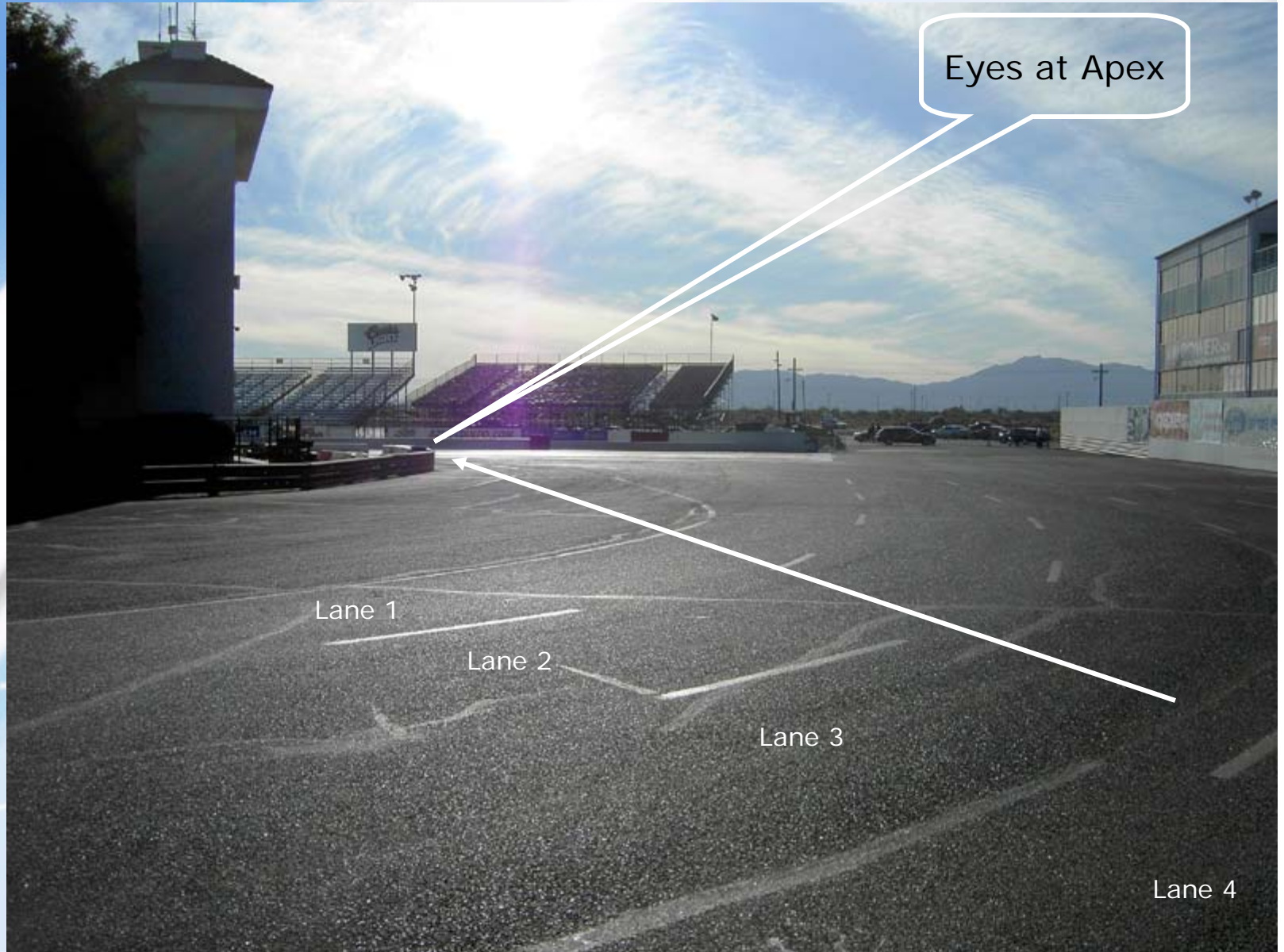
Lane 3

Lane 4

Lane 5

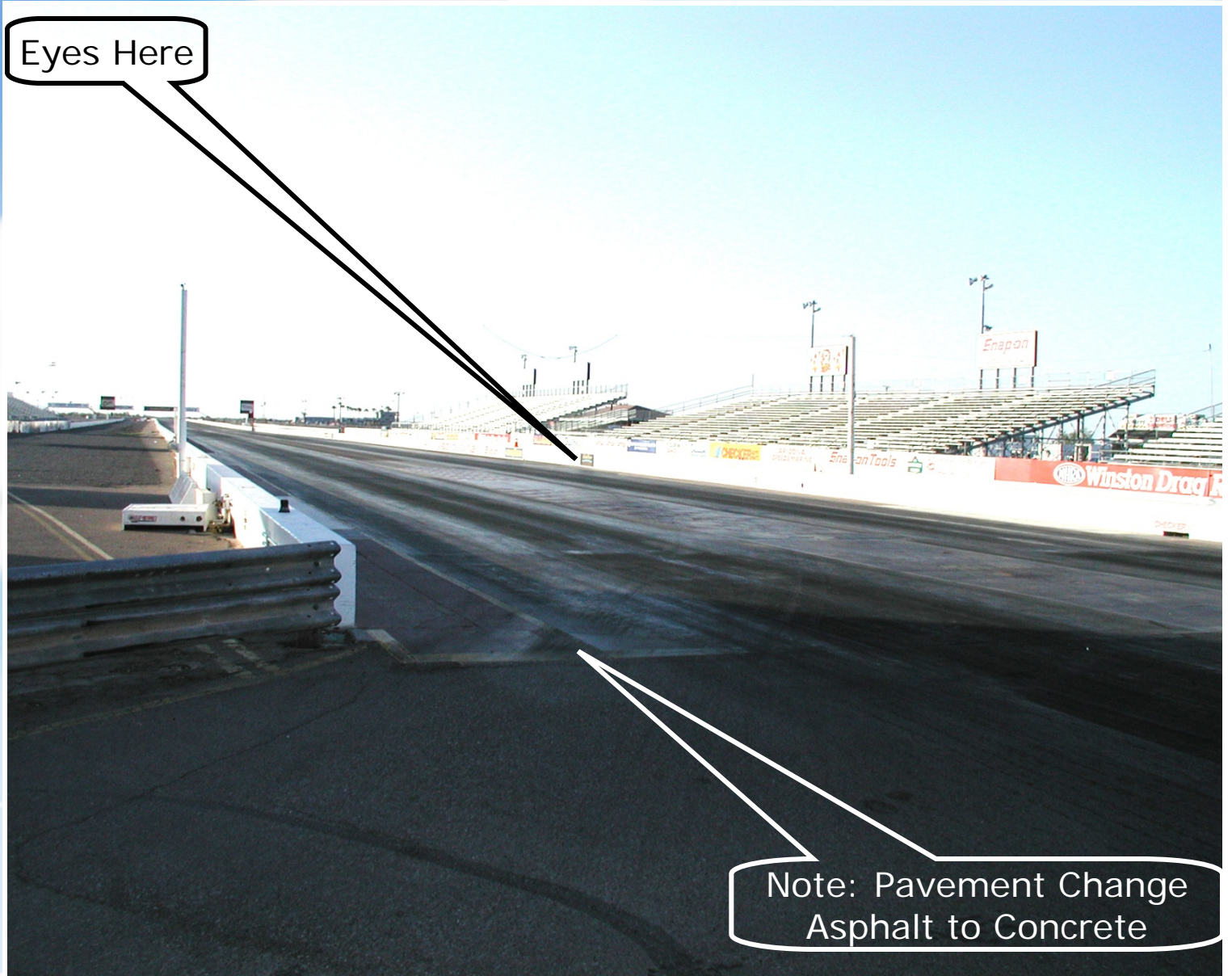


Turn 11/12 – Mid Corner



Turn 12 – Corner Exit

Eyes Here



Note: Pavement Change
Asphalt to Concrete

Lap of the Track



